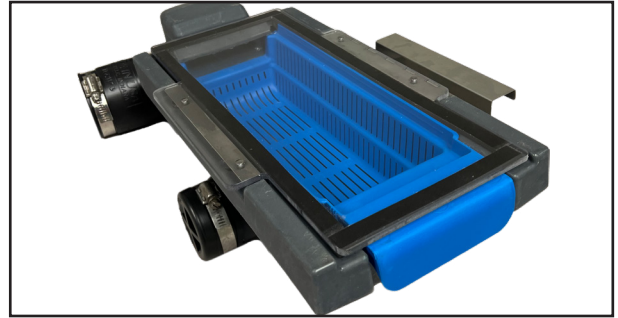




Both Big Dipper and Dry Strainer are field-reversible. Determine flow direction of the Big Dipper and identify the Big Dipper inlet.



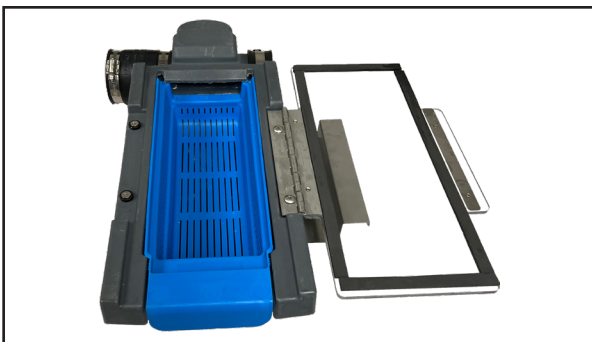
Dry Strainer must be installed on the Inlet side of the Big Dipper. The Dry Strainer door opens toward the Big Dipper.



Screw the support bracket and lid hinge to the Dry Strainer on the side nearest the Big Dipper.



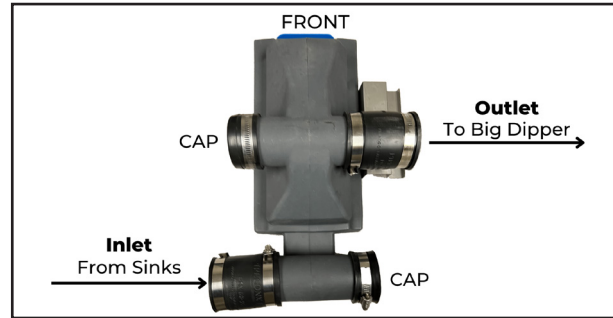
Screw the 2 supplied magnets to the Dry Strainer side opposite the hinge. These help keep the door closed.



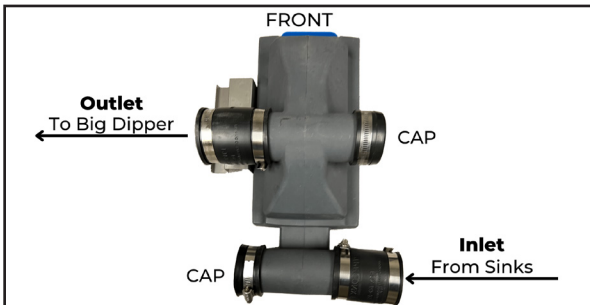
Remove the Flow Control from the Big Dipper Inlet.



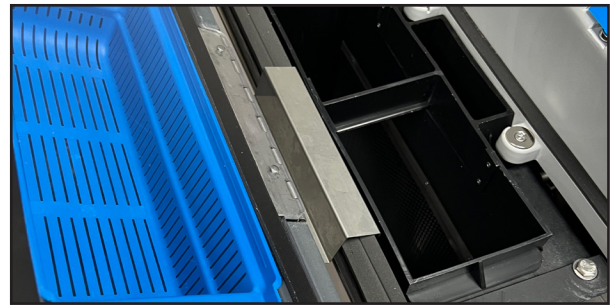
Add the Flow Control to the Dry Strainer inlet before adding and tightening the No-Hub Connector.



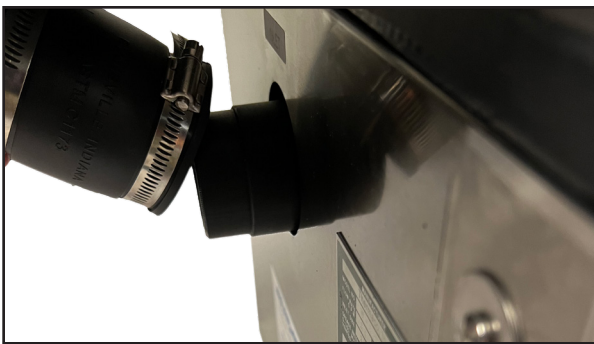
For a Big Dipper with the inlet on the LEFT and the outlet on the RIGHT, connect the included End Caps and No-Hubs as shown.



For a Big Dipper with the inlet on the RIGHT and the outlet on the LEFT, connect the included End Caps and No-Hubs as shown.



Remove the wing lid over the Big Dipper Inlet. Rest the Dry Strainer support bracket on the tank edge. Remove the internal strainer.\*



Fit the Dry Strainer Outlet No-Hub to the Big Dipper Inlet. Tighten all End Caps and No-Hubs.



Replace and latch the wing lid. Plumb the sink to the Dry Strainer Inlet. Remove and empty the Dry Strainer basket daily for best results.

\*Thermaco recommends removing the Big Dipper's Internal Strainer when the Dry Strainer is in use. For those who elect to keep the Internal Strainer while using the Dry Strainer, please schedule monthly cleaning of the Internal Strainer to remove biofilm accumulation to ensure continued flow performance.